

viadonau

Did you know, that...

... viadonau takes charge of 250 kilometres of asphalted cycle tracks?

... between 9 and 12 million tons of goods are transported every year on the Austrian stretch of the Danube?

... viadonau manages 30 kilometres of flood protection dams?

... over 300 bird species are native along the river Danube?

... the flood protection facilities between Vienna and the Slovakian border protect more than 600,000 inhabitants?

... viadonau cares for 800 kilometres of riverbank?

... viadonau manages 15,000 hectares of real estate?

... viadonau locks through more than 90,000 vessels per year?

... viadonau ensures the preservation of 500 kilometres of towpaths?

... one inland vessel transports a ton of goods 4 times further than a truck, but with the same expenditure of energy?

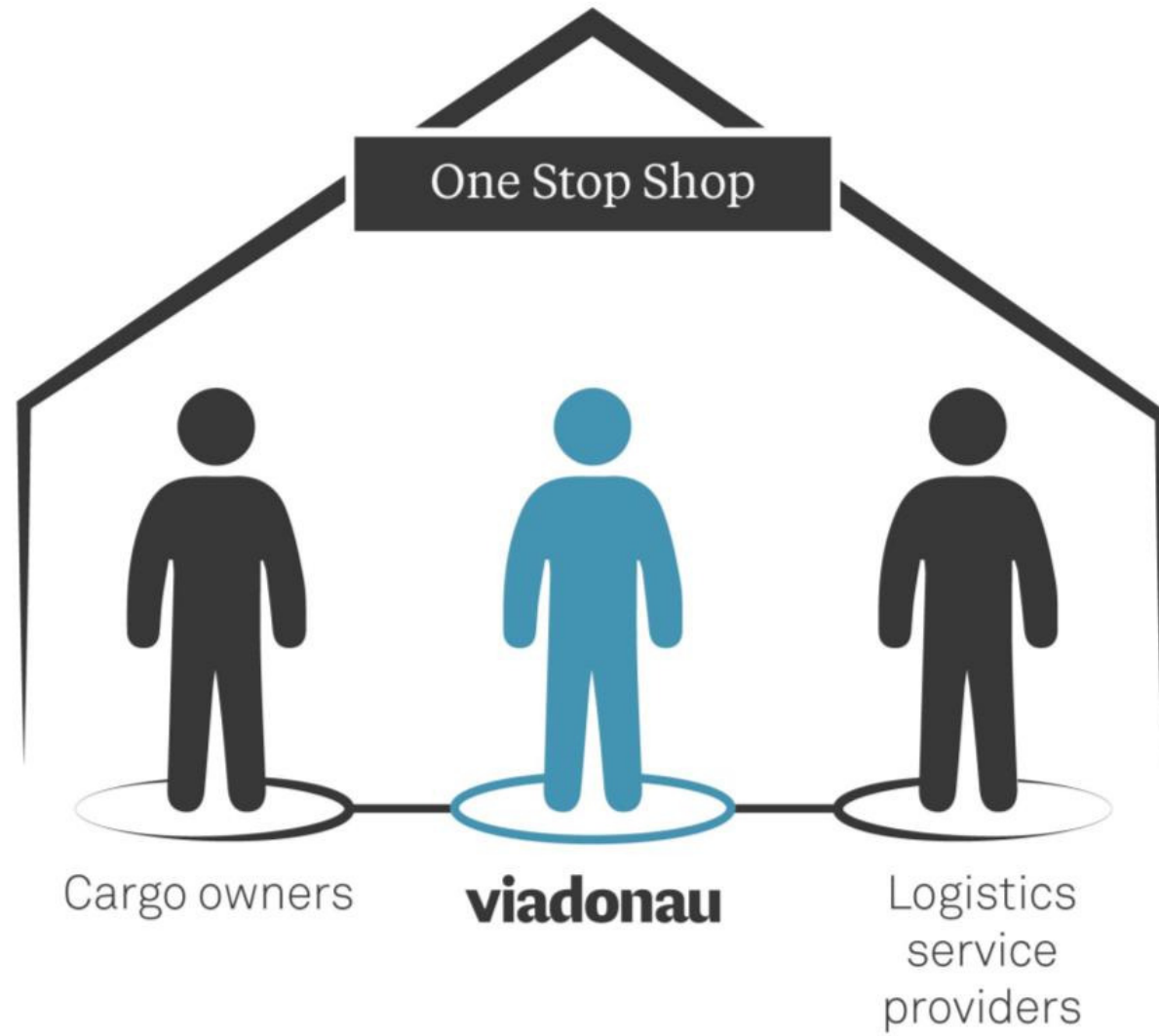


**Have a look at our logistics centre.
Directly connected to over
80 million costumers.**

viadonau & Danube logistics promotion

viadonau

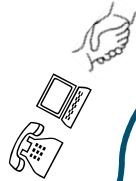




Danube logistics promotion

viadonau

viadonau



General information on the Danube Transport Axis

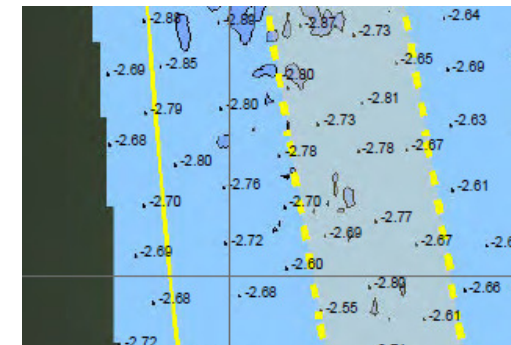
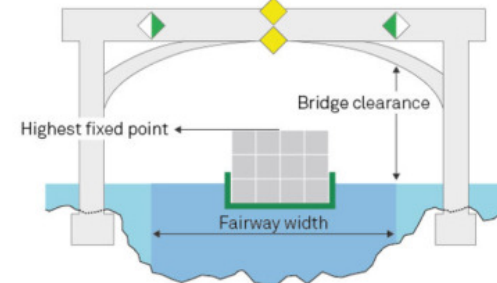
- Navigability
- Types of vessels
- Locks, bridges, list of public berths

Information on the Danube fairway

- Water levels, shallow sections
- Interactive maps
- Inland Electronical charts
- Danube FIS, NtS (entire Danube Region)
- Analysis of navigability

Ports and Terminals

- Danube Ports (www.danube-logistics.info/danube-ports/)
- List of High&Heavy ports in Danube Region
- List of Danube logistics service providers for H&H



Danube logistics promotion

viadonau

viadonau



Transport companies

- Blue Pages (www.danube-logistics.info/the-blue-pages/)



Funding schemes

- National funding programmes
- European funding programmes



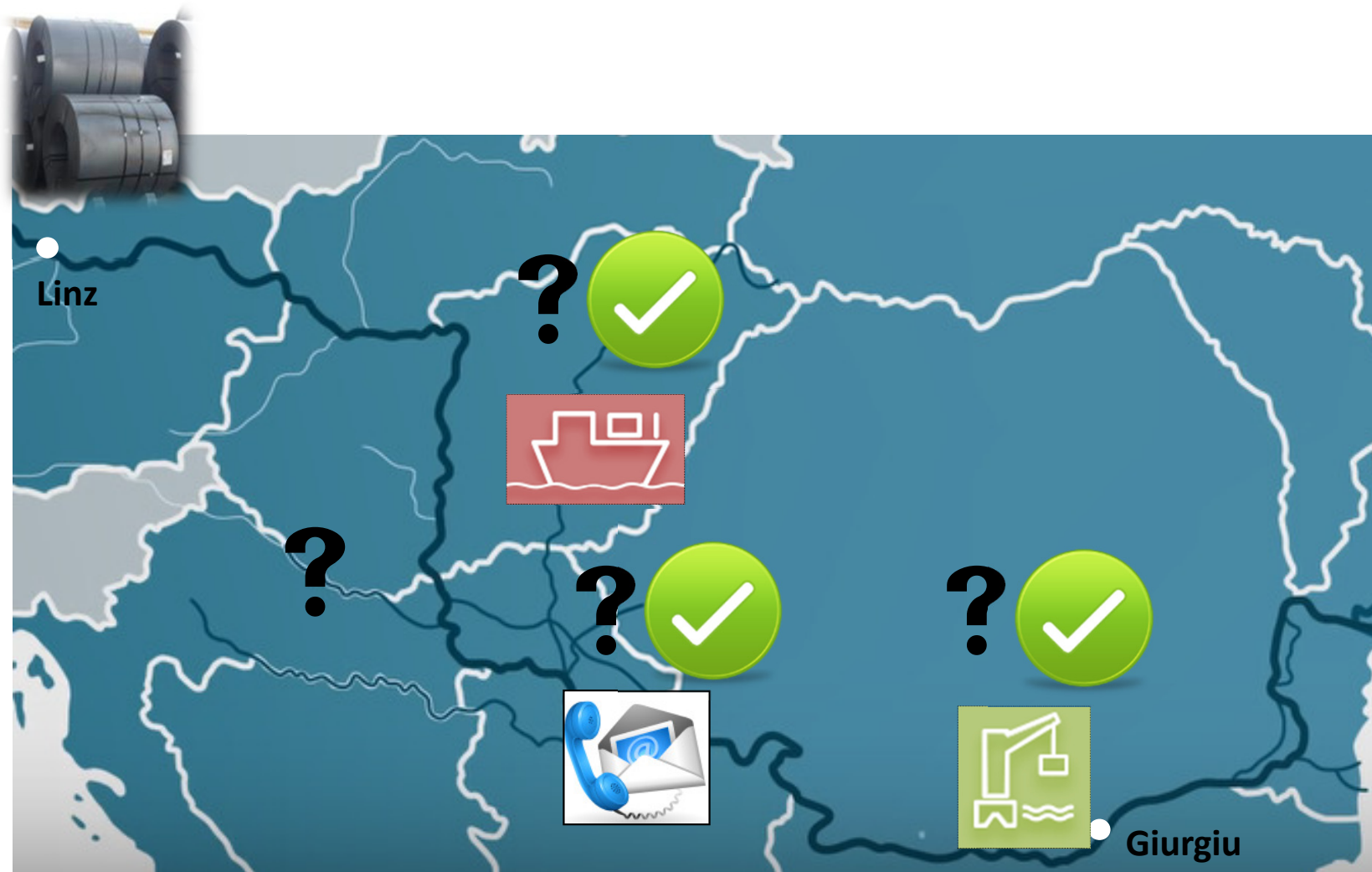
Promising markets

- Working initiative on selected cargo groups
- Market studies



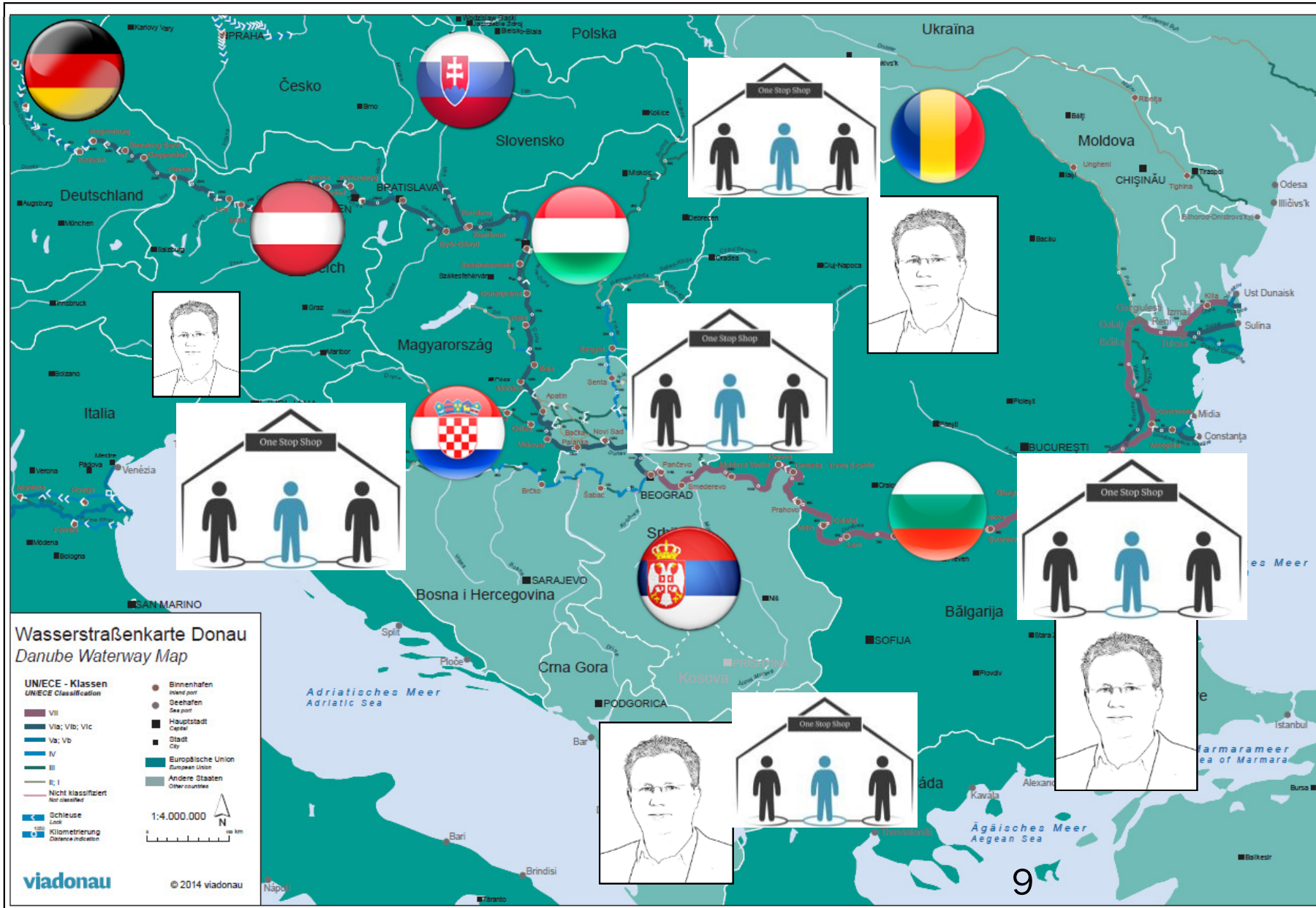
viadonau & Danube logistics

viadonau



Target of Danube Skills: Build up ONE-STOP-SHOPS along the entire Danube Region

viadonau



viadonau