

TRB summary report on data collection Deliverable 4.1.3

This deliverable is based on Tisza countries data information provided by end of December 2017

Version 3, Date Dec-27, 2017



Project co-funded by the European Union (ERDF, IPA funds)

Acknowledgements

Editor **Branislava Matić**, The Jaroslav Černi Institute for the
Development of Water Resources, Serbia

Contributing authors **The full list of contributors to data and information collection from
all five Tisza Countries is included in the Annexes 1-5 – Deliverable
4.1.2**

The information and views set out in this publication are those of the author(s) (DTP project Lead Partners and partners) and do not necessarily reflect the official opinion of the European Union/Danube Transnational Programme. Neither the European Union/Danube Transnational Programme institutions and bodies nor any person acting on their behalf may be held responsible for the use which may be made of the information contained therein.

Contents

ACKNOWLEDGEMENTS	1
CHAPTER 1 – BACKGROUND	3
CHAPTER 2 – SCOPE OF THE WORK	4
CHAPTER 3 – DATA COLLECTION OVERVIEW	5
CHAPTER 4 – SELECTION OF MAPS (EXPORTED FROM GIS) IN DIGITAL FORMAT INCLUDED IN REPORTS	6
REFERENCES	10

Chapter 1 – background

The largest tributaries of the Danube River by catchment area are the Tisza River (157,186 km²) and Sava River (97,713 km²). The Tisza River ranks as the longest tributary (966 km) and the second largest tributary of the Danube River by flow volume, with an average discharge of about 830 m³/sec, and Tisza River Basin (TRB) is the main water source for Hungary, a significant source for Serbia and an important source for western Romania and southeastern part of the Slovak Republic. Additionally, the population is higher in the Tisza River Basin (14 Million) than in the Sava River Basin (8.5 Million). As a result, demand in water is higher in the Tisza River Basin, which raises concerns about the need to ensure a harmonised and sustainable water resource management in the Tisza River Basin. Furthermore, increase in extreme events (severe floods and draughts) in the recent years has adverse affects on water resources, ecosystems, human health, and economy within the region.

Water quantity is identified as relevant water management issue in Tisza River Basin (TRB) due to the over abstraction of groundwater (GW), increase in irrigation and surface water (SW) abstraction, and key integrated water management issues (excess water, droughts, and climate change). In addition, achievement of good status for both GW and SW is obstructed by different sources of pollution. As a result, interlinkages between water quantity and water quality management issues are identified as relevant for the TRB.

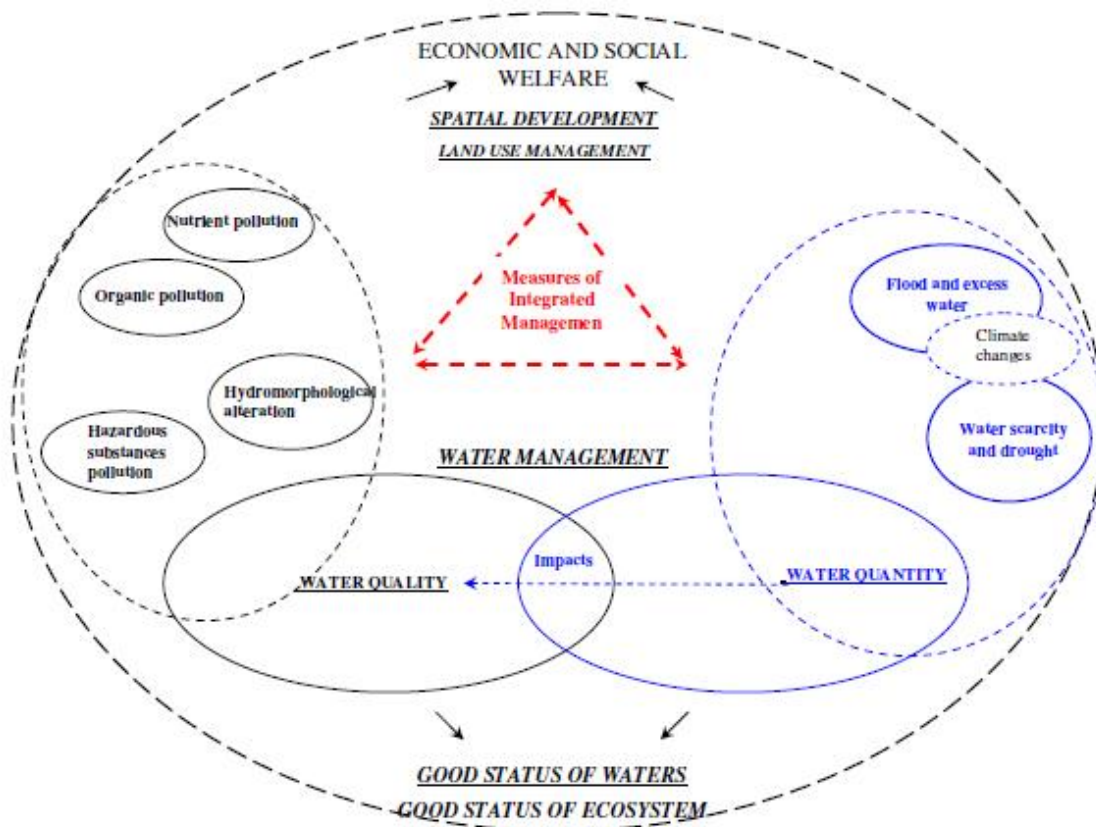


Figure I-1 Interlinkages between water quantity and quality related management issues identified by ICPDR Tisza Group (Source: The First Integrated Tisza River Basin Management Plan)

Chapter 2 – scope of the work

Given the water use that will very likely extend (Tisza Analyses Report -TAR, 2007) due to increase in water demand and foreseen climate change adverse effects there is need to comprehensively assess water use and demand and groundwater bodies' status within the TRB.

Country reports (Deliverable 2.1.2.) are based on templates for data collection (D 4.1.1: Standardized joint check-list as a basis for the data collection) and include following information:

- Water resources – surface water: flow data and water storages ;

- Water use: present water use and consumption (period 2013 - 2015) for: Irrigation, other agricultural use (livestock farms, fish production, etc.), Public water supply, water supply of industry - including thermal power plant cooling, hydropower, navigation, hydrological requirements for good ecological status, other uses, and preservation of hydraulic regimes and ecological conditions in canal network;

- Water demand: present water use and consumption (period 2013 - 2015) for: Irrigation, other agricultural use (livestock farms, fish production, etc.), Public water supply, water supply of industry - including thermal power plant cooling, hydropower, navigation, hydrological requirements for good ecological status, other uses, and preservation of hydraulic regimes and ecological conditions in canal network;

- In addition to water use and demand water source (surface and groundwater) are identified;

- Updated information and data with respect to TAR 2007 for GWBs >1,000 km² and of basin-wide importance;

- Shape files relevant for GWBs (updated on the DanubeGIS) and shape files for present water use.

Chapter 3 – data collection overview

Activities relevant for data collection started at the beginning of project implementation and are still ongoing. The first step was review of the background studies and reports to assess and evaluate all relevant to be considered. The next step was development of templates for data collection. Both templates include chapter General instructions and info. They are distributed to project partners for comments and the final version (agreed among majority of Tisza countries and ICPDR) are handed out to Tisza countries.

Table below provides summary on data collection overview:

Table III.1: JOINTISZA Data collection overview –Act.4.1

TRB Country	DATA and INFORMATION reported by the end of December 2017				
	Report : water quantity data collection	Shape files for water use	Report for GWBs data collection	GWBs data sets verified with ICPDR	GWBs Summary report
Ukraine	completed	completed	completed	completed	completed
Slovakia	completed (90%)	completed (90%)	completed	completed	completed
Romania	completed	pending	completed	completed	pending
Hungary	pending	pending	completed	completed	pending
Serbia	completed	completed	completed	completed	completed (90%)

According to data presented in table above approximately 84% of activities on data collection are completed within the JOINTISZA project activity 4.1. It is realistic to expect that data collection activities addressed in this report will have utilization rate of 100% by the beginning of March.

Chapter 4 – Selection of maps (exported from GIS) in digital format included in reports

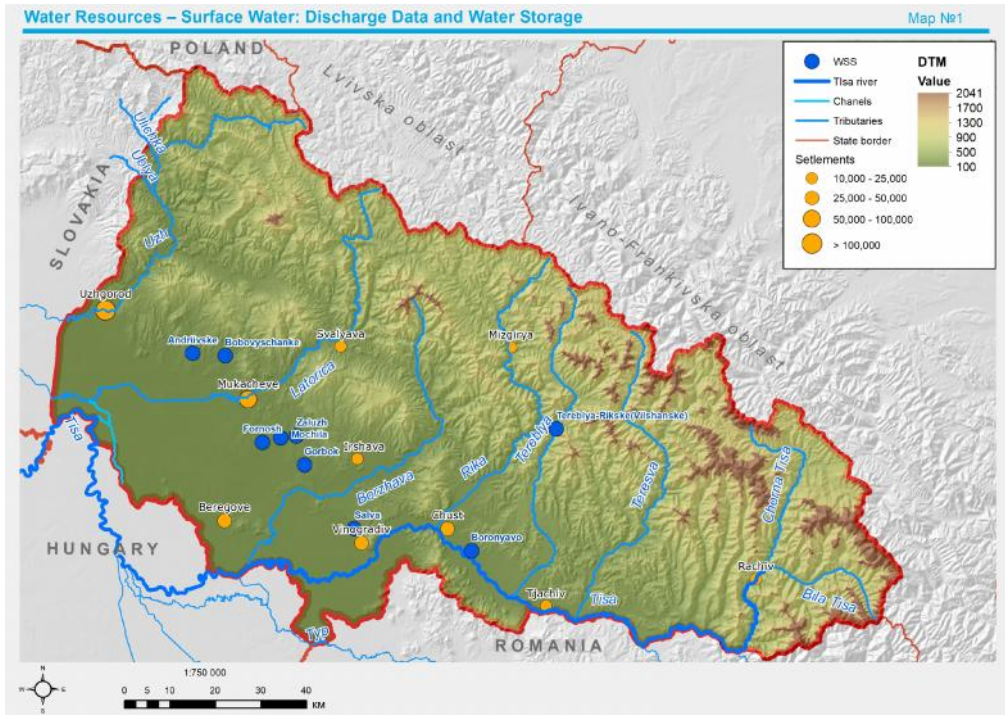


Figure IV.1 Water Resources Map – Surface water: Discharge data and water storage- Ukraine

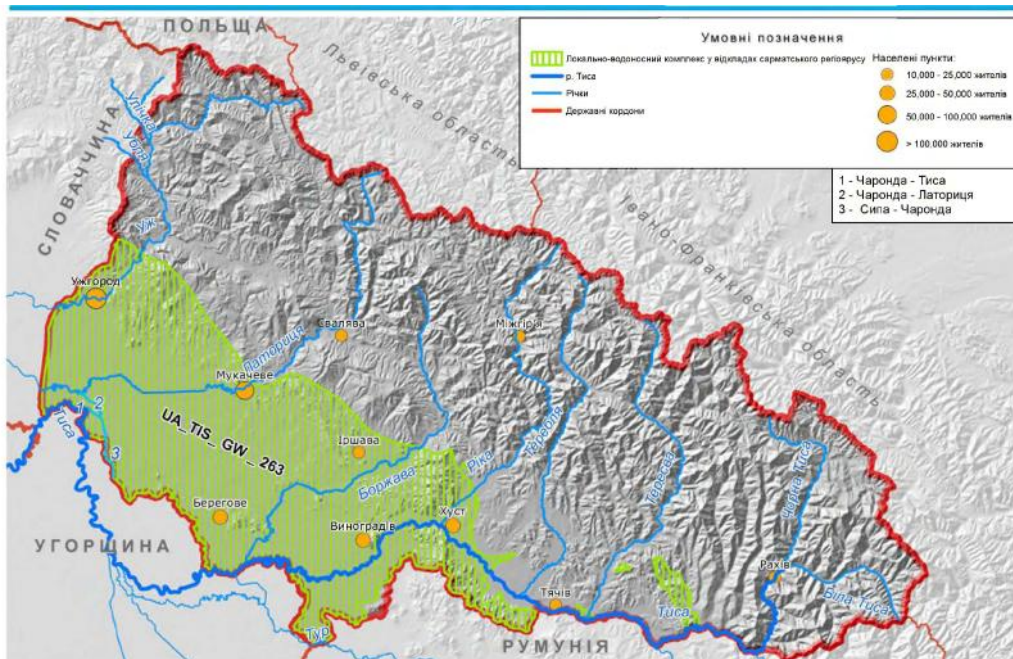


Figure IV.2 TRB groundwater bodies- Ukraine

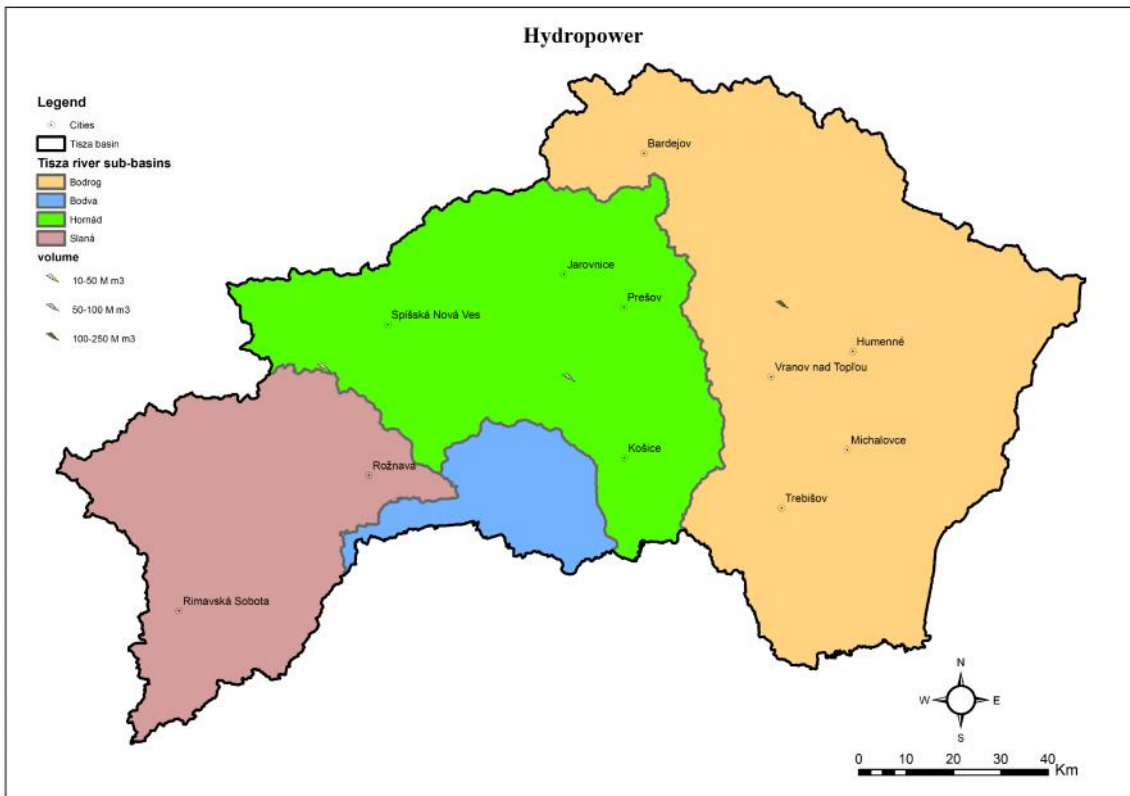


Figure IV.3 Water use for hydropower – Slovakia

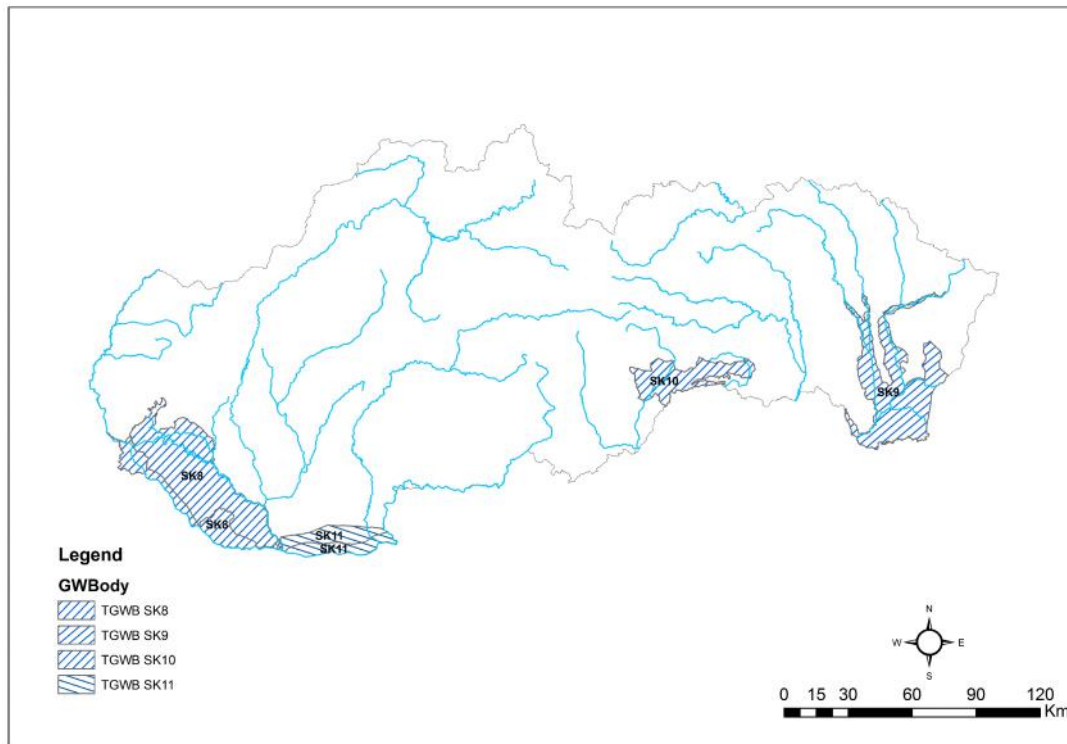


Figure IV.4 TRB groundwater bodies- Slovakia

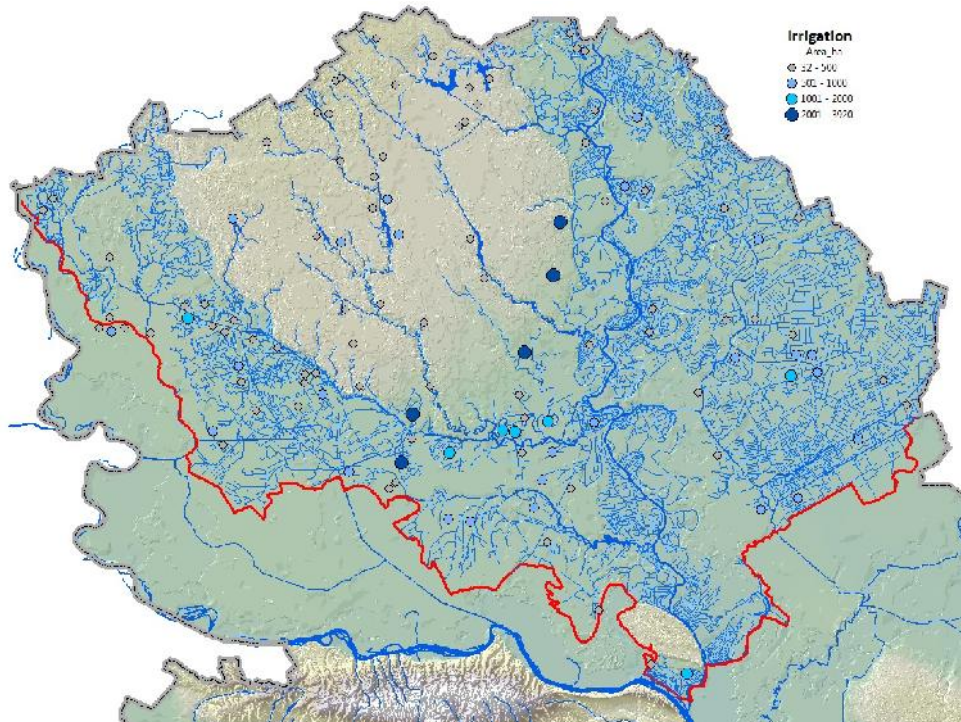


Figure IV.5 Map of irrigated areas within the TRB in Serbia

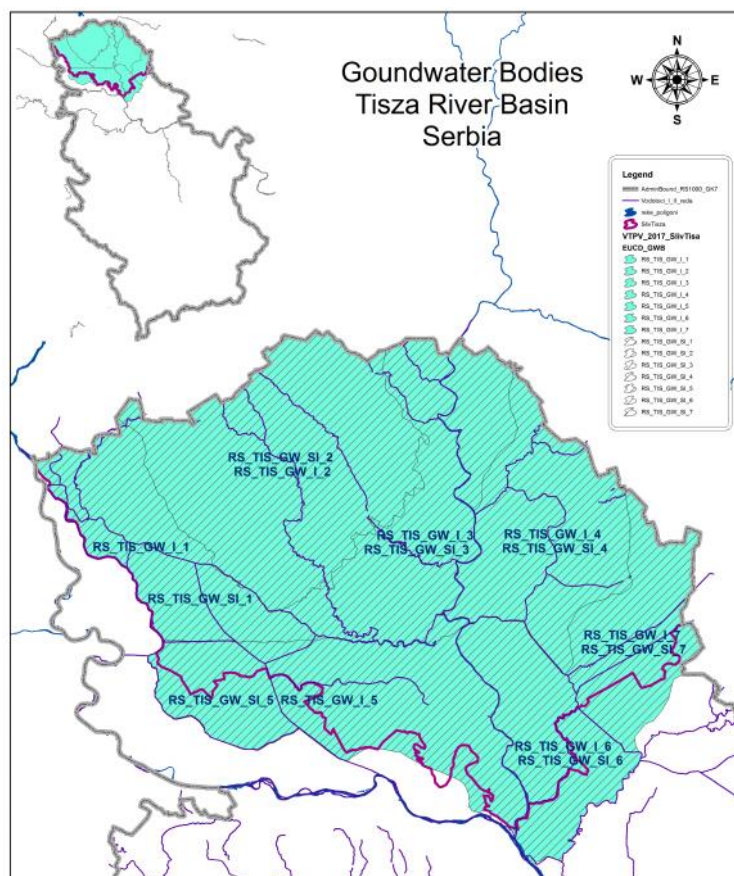


Figure IV.5 Map of TRB GWBs - Serbia

References

Analysis of the Tisza River Basin, 2007
Integrated Tisza River Basin Management Plan, 2011
Country Reports Ukraine (included in deliverable 4.1.2)
Country Report Slovakia (included in deliverable 4.1.2)
Country Report Romania (included in deliverable 4.1.2)
Country Report Hungary (included in deliverable 4.1.2)
Country Report Serbia (included in deliverable 4.1.2)

Project co-funded by the European Union (ERDF, IPA funds)

Partners: General Directorate of Water Management, Hungary | Global Water Partnership Central and Eastern Europe, Slovakia | International Commission for the Protection of the Danube River | Ministry of Water and Forests, Romania | Ministry of Foreign Affairs and Trade, Hungary | National Administration "Romanian Waters", Romania | National Institute of Hydrology and Water Management, Romania | Public Water Management Company "Vode Vojvodine", Serbia | Regional Environmental Center for Central and Eastern Europe, Hungary | The Jaroslav Černi Institute for the Development of Water Resources, Serbia | Water Research Institute, Slovakia | World Wide Fund for Nature Hungary

Associated Partners: Interior Ministry, Hungary | Republic of Serbia Ministry of Agriculture and Environmental Protection – Water Directorate | Secretariat of the Carpathian Convention (SCC), Austria | State Agency of Water Resources of Ukraine | Tisza River Basin Water Resources Directorate, Ukraine