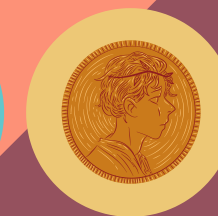
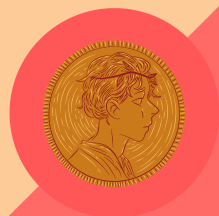
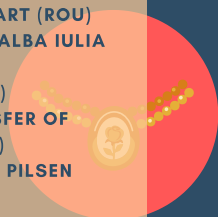


ARCHEODANUBE FULL PARTNERS

- CITY MUNICIPALITY PTUJ (SLO)
- INSTITUTE FOR THE PROTECTION OF CULTURAL HERITAGE OF SLOVENIA (SLO)
- FIRST HUNGARIAN RESPONSIBLE INNOVATION ASSOCIATION (HUN)
- WEST PANNON REGIONAL AND ECONOMIC DEVELOPMENT PUBLIC NONPROFIT LTD (HUN)
- ROMANIAN ACADEMY CLUJ BRANCH, INSTITUTE OF ARCHAEOLOGY AND HISTORY OF ART (ROU)
- NATIONAL MUSEUM OF UNIFICATION ALBA IULIA
- CITY OF VODNJAN - DIGNANO (CRO)
- ASSOCIATION CULTURE & WORK (GER)
- BULGARIAN ASSOCIATION FOR TRANSFER OF TECHNOLOGY AND INNOVATION (BGR)
- REGIONAL DEVELOPMENT AGENCY OF PILSEN REGION (CZE)
- OIKOPLUS KG (AUT)
- URBAN LAB CHISINAU ASSOCIATION (MDA)
- MUNICIPALITY OF CENTAR SARAJEVO (BIH)
- MUSEUM OF SREM (SRB)



TO CONTACT



VISIT US AT
WWW.INTERREG-DANUBE.EU/ARCHEODANUBE



Go to www.facebook.com/archeodanube



PROGRAMME CO-FUNDED BY THE EUROPEAN UNION

ARCHEODANUBE

*Archaeological park in urban areas as a tool
for local sustainable development*



ABOUT US

ArcheoDanube will help small/medium cities in Danube regions to improve effectiveness of heritage sites' management with focus on archaeological parks as innovative tools in the urban parts of the cities for the preservation and sustainable use of cultural heritage and resources with synergies for development of archaeotourism.

“For me, archaeologists do not discover the past; they work on what remains. Archaeology is about our relationships with what is left of the past. And more – archaeology is the discipline of things – the history of design, how people get on with the material world, materiality itself.”

Michael Shanks (Archaeologist)

OUR PROGRAMME

The main objective of the project is to improve the effectiveness of management in heritage sites with special attention to archaeological parks in urban areas. In frames of the project the implementation of new touristic initiatives (archeotourism) will be supported with plans, trainings, presentations, tools and small pilot activities. The role of archaeological parks is twofold: on the one hand, they are tools that facilitate local communities to manage, control and protect their heritage resources; on the other hand, they attract tourists, so they can contribute to the development of archaeotourism in cities. The project considers archaeological parks as an integrated concept, as they are an outstanding part of both archaeological heritage/urban development of cities and cultural tourism.

