

GIS-BASED TERRITORIAL ATLAS OF ROMAN ROUTES LEGACY IN DR

Work Package Title	T3 Mapping and promoting Roman network of routes and settlements
Activity No. and Title	A.T3.2 Development of a GIS-based territorial Atlas of Roman routes legacy in DR
Deliverable	Deliverable D.T3.2.3 Mock-up of GIS-based territorial Atlas of Roman routes legacy in DR
Deliverable Responsible	ERDF PP8 Geodetic Institute of Slovenia (GI)
Main Authors & Partner Acronyms	Tomaž Žagar, Marko Zore, Blaž Barborič (GI)
Co-Authors & Partner Acronyms	
Reviewed by: Name and Partner Acronyms	
Status	Draft (D)
	Revised draft (RV)
	<u>Final (F)</u>
Length	8

Table of contents

GIS-BASED TERRITORIAL ATLAS OF ROMAN ROUTES LEGACY IN DR	3
Filter the data by attributes	3
Filter the data by location	4
(Optionally) set map view and share the data	4
API	5
Images and (URL) links of spatial features	5
Editing images and links	5
Editing images	7
Editing links.....	8
Preview of images and links	8

GIS-BASED TERRITORIAL ATLAS OF ROMAN ROUTES LEGACY IN DR

<http://ister.gis.si/>

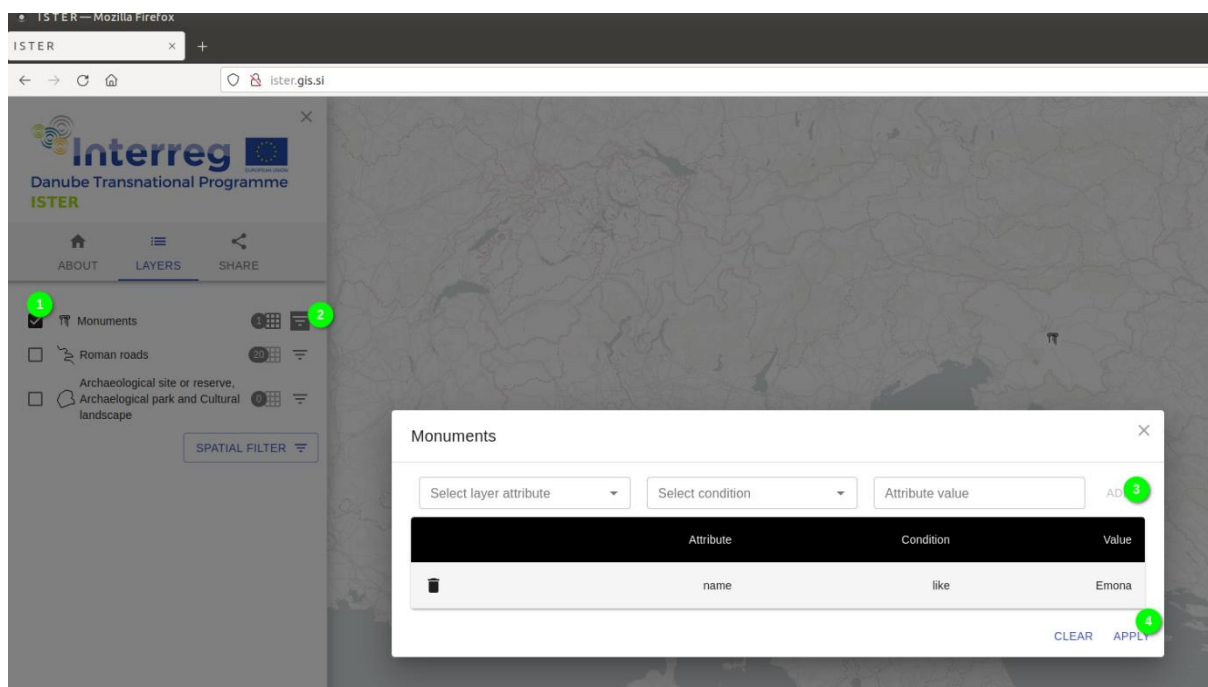
GIS-based territorial Atlas provides a spatial representation of the open inventory of Roman routes legacy in DR and relevant information regarding protection limits applicable to both Roman Settlements and Roads Network, retracing the history of the Roman Empire through Roman Roads Network in Danube Region (DR) and its relation with the natural environment. The GIS Atlas of Roman routes in DR represents an innovative cartographic web application of the Roman routes in the entire DR, aimed at mapping, increasing their online and trigger digital preservation of their historical values. The platform is more than just a cartographic Atlas; it is built on a widely-documented data stock, which can be geo-visualised, analysed, managed and disseminated through the platform's functions. The GIS Atlas is basically a presentation and query tool for the Roman Settlements and Roads Network data organized in the underlying database according to the Catalogue on Roman routes & settlements. Finally, the Atlas aims at creating an impact on evidence-based spatial policies related to protection and sustainable use of Roman heritage values.

The application of Atlas of Roman routes legacy on DR is designed to be user-friendly, easy manageable and intuitive for use. The application comprises interactive map that offer location, descriptions and visual representations of Roman roads and monuments with photographs, external links and descriptive data of archaeological sites.

The atlas provides:

- Query tool over database items;
- Possibility to share the predefined queries;
- API interface for sharing the data (machine access and download of the data);
- Ability to add multimedia material for individual features (e.g. photos, articles, descriptions);
- Overview of the database and associated media material.

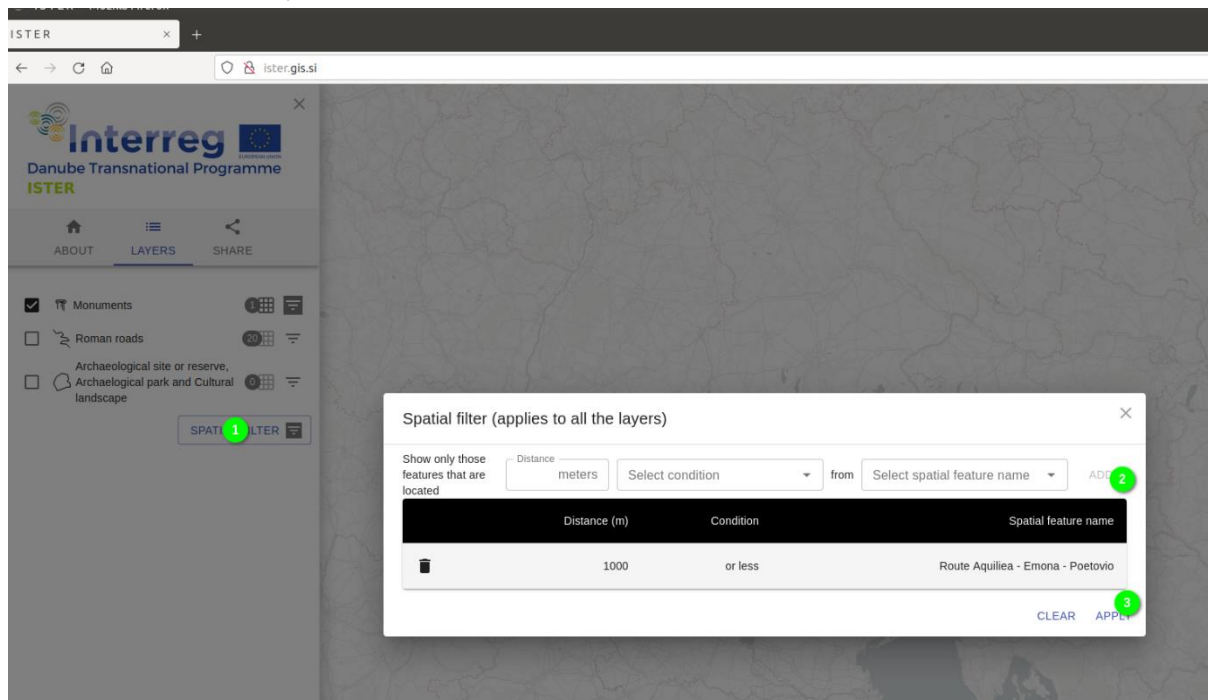
Filter the data by attributes



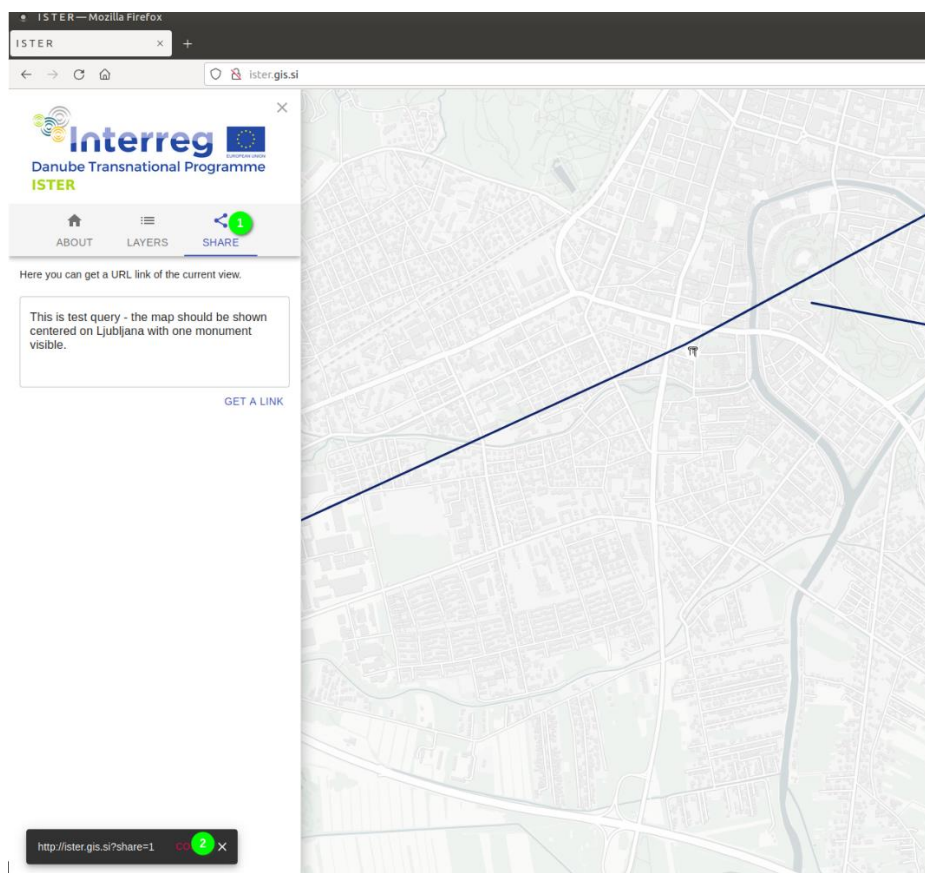
The screenshot shows the ISTER web application interface. On the left, there is a sidebar with a 'LAYERS' section containing three items: 'Monuments' (checked), 'Roman roads', and 'Archaeological site or reserve, Archaeological park and Cultural landscape'. A 'SPATIAL FILTER' button is visible below the layers. A dialog box titled 'Monuments' is open in the foreground, allowing for attribute-based filtering. The dialog has three input fields: 'Select layer attribute', 'Select condition', and 'Attribute value'. Below these fields is a table with columns for 'Attribute', 'Condition', and 'Value'. The table contains one row with the values 'name', 'like', and 'Emona'. At the bottom of the dialog, there are 'CLEAR' and 'APPLY' buttons.

Attribute	Condition	Value
name	like	Emona

Filter the data by location



(Optionally) set map view and share the data



<http://ister.gis.si?share=1>

API

- get attribute definitions for ISTER layers
GET http://ister.gis.si/backend/ister-server/public/api/layers_definitions
- get layers data
 - for all the layers:
GET http://ister.gis.si/backend/ister-server/public/api/layers_data
 - for specific layer:
GET http://ister.gis.si/backend/ister-server/public/api/layers_data/{layer key}
e.g. this returns only the data for roads:
http://ister.gis.si/backend/ister-server/public/api/layers_data/roads
 - shared layer data (predefined filters that a user has stored):
GET http://ister.gis.si/backend/ister-server/public/api/layers_data?share={share ID}
e.g, if shared link is: <http://ister.gis.si/?share=1>, you can get the data like this:
http://ister.gis.si/backend/ister-server/public/api/layers_data?share=1

Images and (URL) links of spatial features

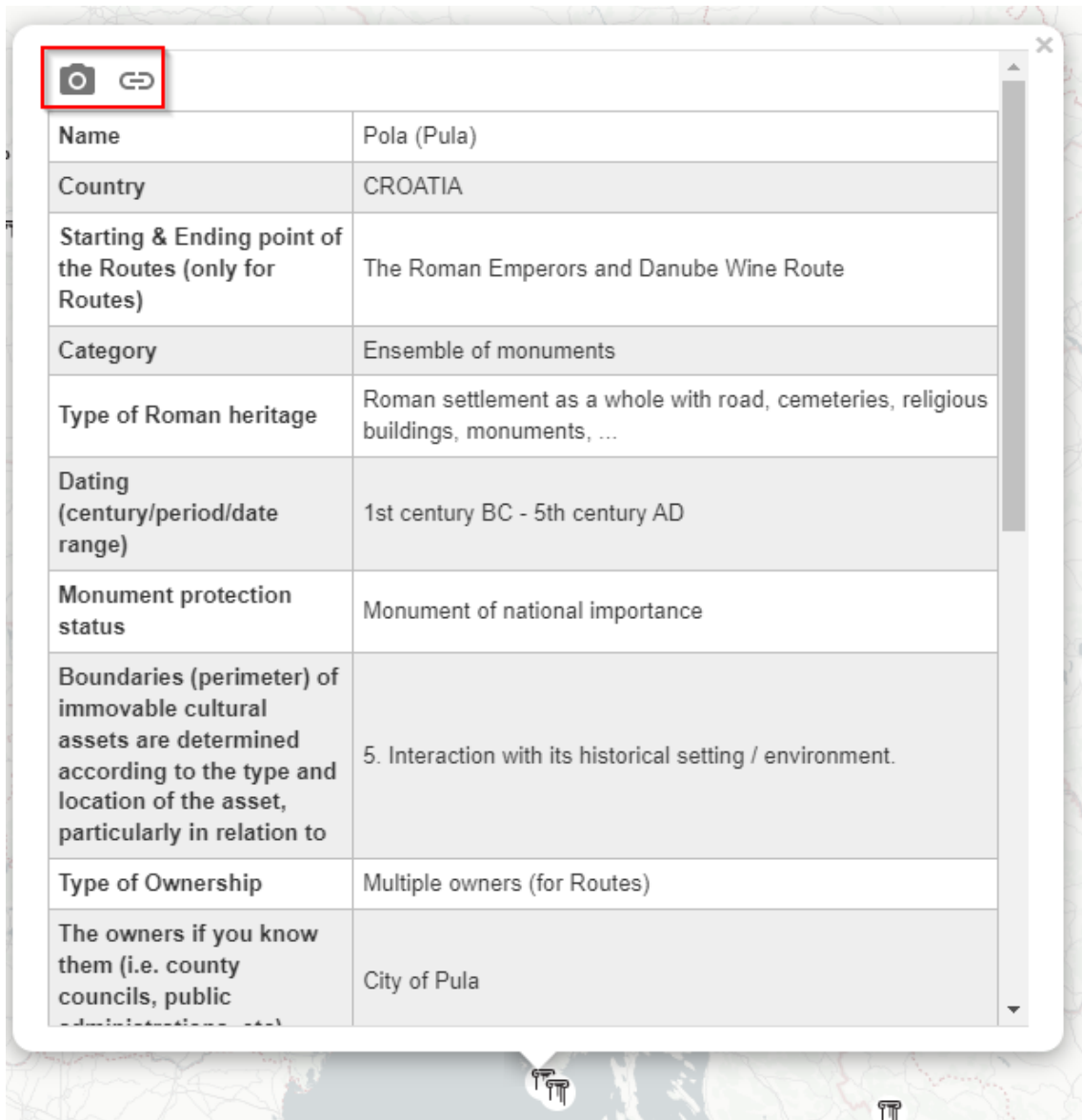
Initially it was meant that images and links are going to be collected from the Google Sheet where we are collecting attribute values, however, since especially collecting the images from Google Sheet is quite a tedious task and cannot be easily automated we provided special (admin) “edit mode” of ISTER atlas where you can add/remove images and links and also equip them with the corresponding descriptions.



Editing images and links

Image and links edit mode can be accessed by opening the following URL:

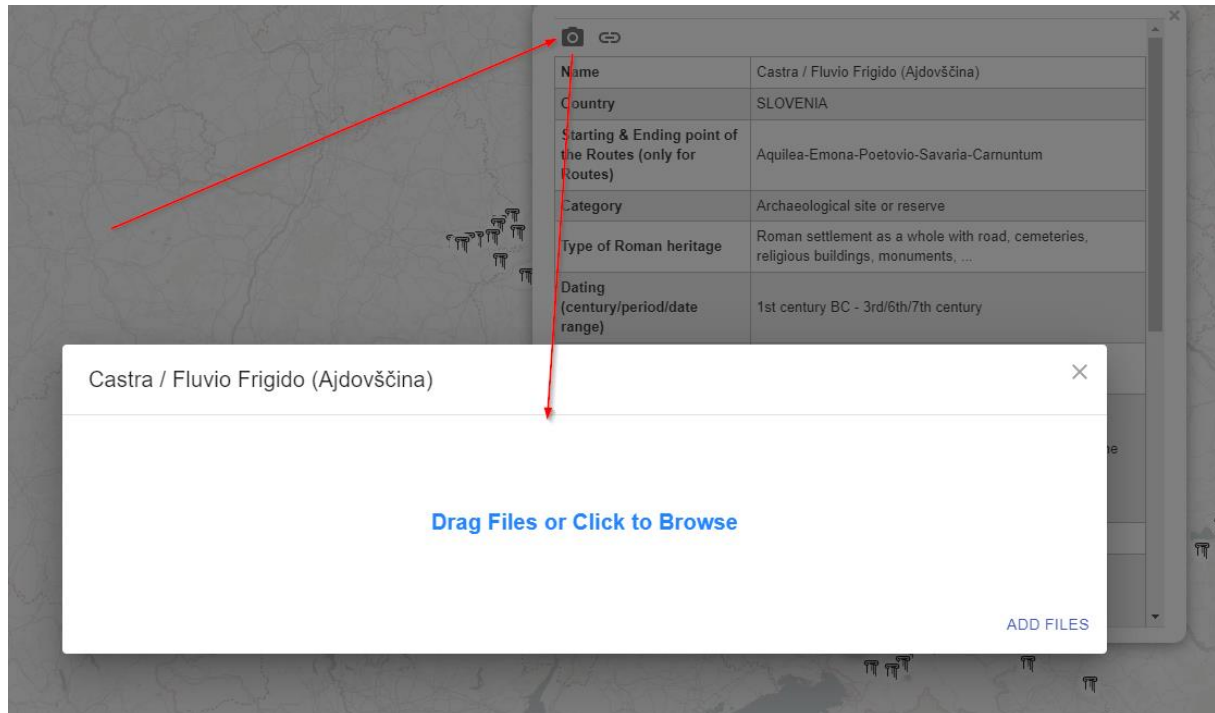
<http://ister.gis.si/?key=6925d3d7-6f90-4f5b-b34b-72fd42becb03>

Every feature popup window (opened with mouse click on feature in the map) in edit mode has two icons, one for editing the images and other for editing the hyperlinks:



 	
Name	Pola (Pula)
Country	CROATIA
Starting & Ending point of the Routes (only for Routes)	The Roman Emperors and Danube Wine Route
Category	Ensemble of monuments
Type of Roman heritage	Roman settlement as a whole with road, cemeteries, religious buildings, monuments, ...
Dating (century/period/date range)	1st century BC - 5th century AD
Monument protection status	Monument of national importance
Boundaries (perimeter) of immovable cultural assets are determined according to the type and location of the asset, particularly in relation to	5. Interaction with its historical setting / environment.
Type of Ownership	Multiple owners (for Routes)
The owners if you know them (i.e. county councils, public administrations, etc.)	City of Pula

Editing images

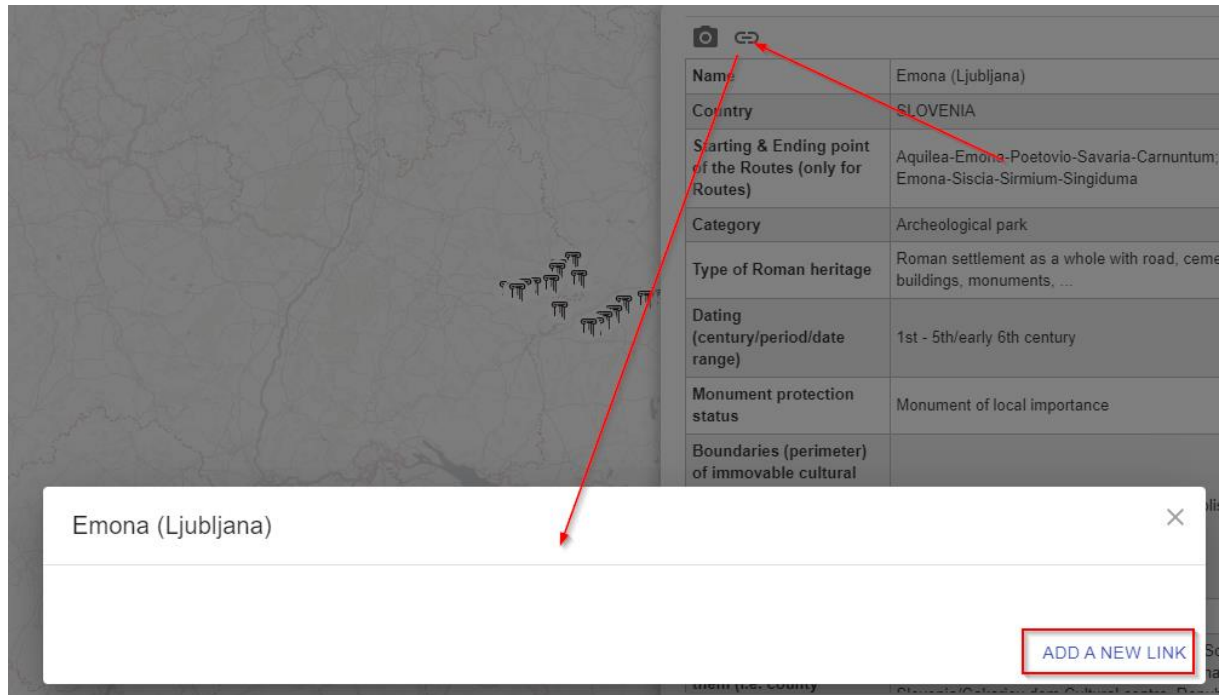


You can add descriptions and change image order:



Images are saved automatically upon closing the dialog.

Editing links



Links can be added, reordered or removed:



Links are saved automatically upon closing the dialog.

Preview of images and links

When using ISTER atlas without an admin key, the images and links are shown in a gallery in a defined order and without the possibility to edit. For example, here is shown a spatial feature (Emona) with some images and links defined as described in chapters above:

<http://ister.gis.si/?share=10>